



C-Plan has been developed to enable local planning authorities and developers to achieve fast and effective compliance with sustainable energy planning policies. Configured to meet specific local planning policies, C-Plan uses simple, easy to follow steps to quantify the energy and carbon emissions impact of your development and evaluate renewable/low carbon energy proposals.

C-Plan: Helping secure low carbon development in Woking Borough Council

Developers of new buildings are increasingly being required, during the early stages of a planning application, to provide information about energy consumption and carbon dioxide emissions of new developments.

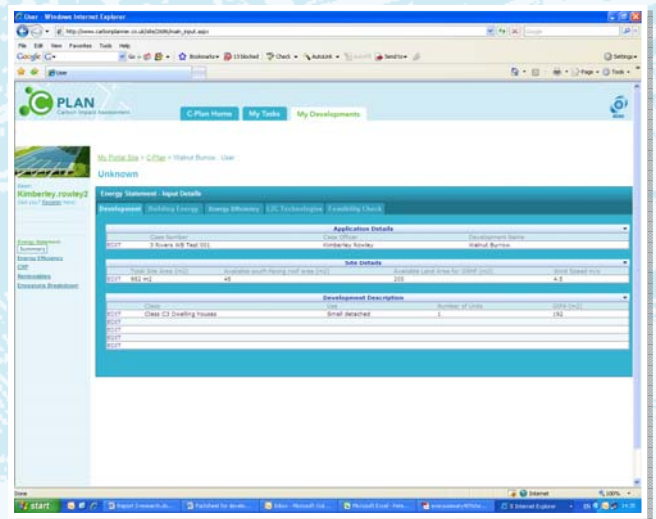
Woking Borough Council now requires you to meet specific renewable energy and carbon dioxide targets. Planning applications must show how the proposed development will meet these, which will involve producing an energy statement. The council is encouraging developers to submit their energy statements through C-Plan, which provides a simple and efficient means of checking compliance with the targets.

What is C-Plan?

C-Plan is a web-based collaborative tool, linking together developers and planners. There is no charge for developers to submit their energy statement through C-Plan.

How C-Plan can help you

- It provides you with easy-to-follow templates helping you to submit clear, concise information regarding the energy and carbon impact of your proposal.
- It enables you to submit an energy statement electronically to the relevant case officer.
- It keeps track of the status of the approval process of your application, keeping you informed of the decisions that have been reached and whether further information is required from you.



Data input form

Your energy statement

C-Plan uses the information that you input to generate an energy statement containing all the information needed for the council to assess whether your proposals meet the targets.

It is stored centrally and presented in an easy to understand format which uses traffic lights for key indicators and a range of graphs for carbon emissions impacts.

The Process

If you need to submit an energy statement to Woking Borough Council, and have your energy data available, you will need to complete the following steps:

- 1) **Go to www.carbonplanner.co.uk and fill in the form on the 'contact us' page.** You will then be provided with a unique password which will enable you to log in to C-Plan via the internet.
- 2) **Log in and fill in the online questionnaire.** You will be asked for basic details about your development along with the energy efficiency measures and renewable and low carbon energy technologies that you are proposing in order to meet the carbon reduction target.
- 3) **Submit your energy statement online.** Your development control case officer will receive an email alert and will log in to view the energy statement to assess whether the target has been met.

You will receive an electronic response from the case officer. This will confirm whether the energy statement has been approved or whether further information is required from you.



www.carbonplanner.co.uk



Offline tool

Need help calculating your energy data?

If you do not have information about the energy use and carbon emissions of your development available, ecsc can assist you. We have a highly skilled technical services team who can use C-Plan to calculate your baseline emissions, discuss the appropriate sustainable energy options and produce an energy statement on your behalf. Alternatively our offline tool can help you to evaluate a variety of sustainable energy measures including energy efficiency, combined heat and power and renewable energy.

Contact Mary Rawlinson at mary.rawlinson@ecsc.uk.com or tel. 0207 922 1664. Please note that there is a charge for these services.

How can I find out more?

Go to www.carbonplanner.co.uk or contact Aidan Dunsdon at aidan.dunsdon@ecsc.uk.com or tel. 0207 922 1667.



ecsc

Energy Centre for
Sustainable Communities

Part of the Thamesway Group